

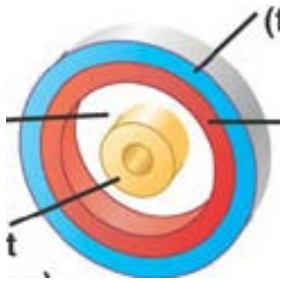
Chapter 27-3: p694-698

1. Give two characteristics of annelids that make them different from other worms.

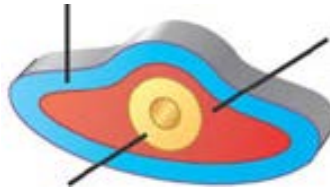
Segmented bodies; true coelom; closed circulatory system...

2. Identify the scheme that represents the body of a coelomate, a pseudocoelomate, and an acoelomate, and identify which are roundworms, annelids and flatworms.

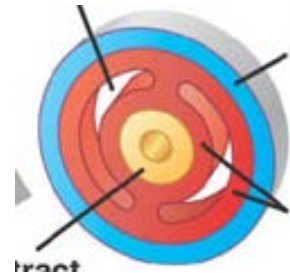
pseudocoelomate
roundworms



acoelomate
flatworms



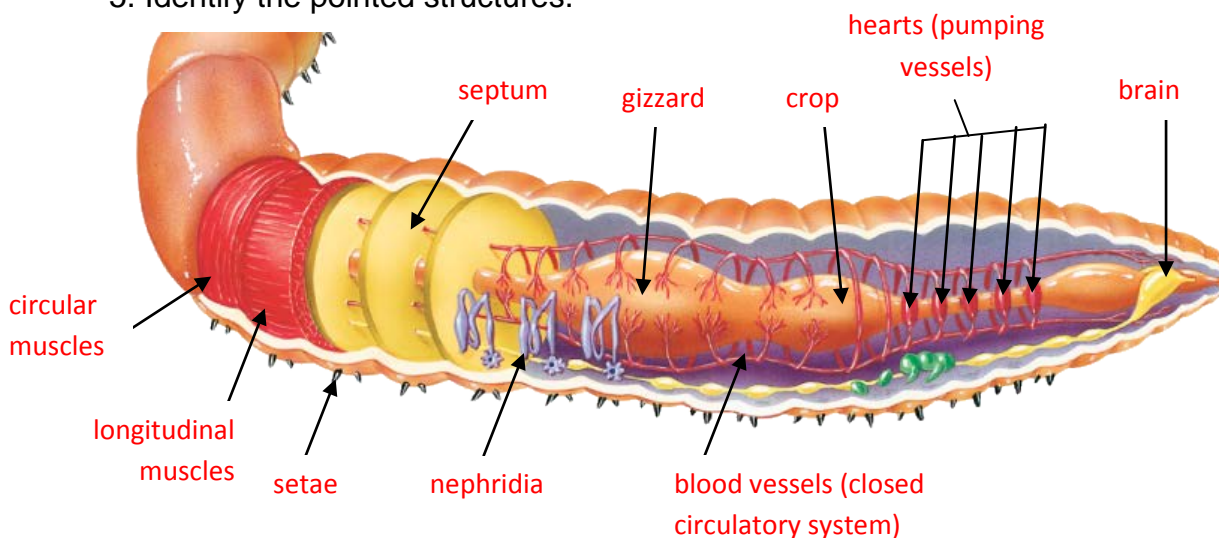
coelomate
annelids



3. Complete the sentence: The body of an annelid is divided into segments. Each segment is separated by **septum**, which are internal walls between each segment.

4. True or false? Annelids have complex organ systems. **True**

5. Identify the pointed structures.



6. What is the clitellum?

A clitellum is a band of thickened, specialized segments. It secretes a viscid sac in which eggs are deposited. Only in oligochaetes and leeches.

b) Identify the clitellum on the image.



7. Identify the class of annelids:

- a) Live in soil and fresh water mainly : **oligochaetes**
- b) External parasites that suck blood : **leeches (Hirudinea)**
- c) Some live in a protective tube they secrete : **Polychaetes**